

Emma Mahon (Paladin Mabel)
Raiden Shogun
Genshin Impact



Reference Photos



Supply List/Pattern Credits

Patterns Used:

Kimono Top and Sleeves- PatternCosPatterns Spirit Blossom Ahri pattern on Etsy and heavily modified by me

Shoulder Pauldron- NATACosplayCraft on Etsy

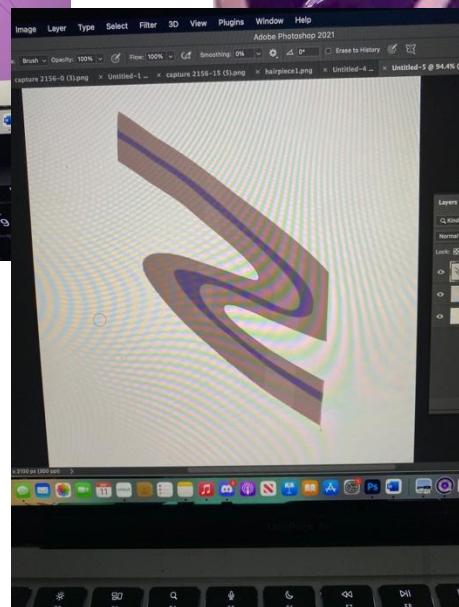
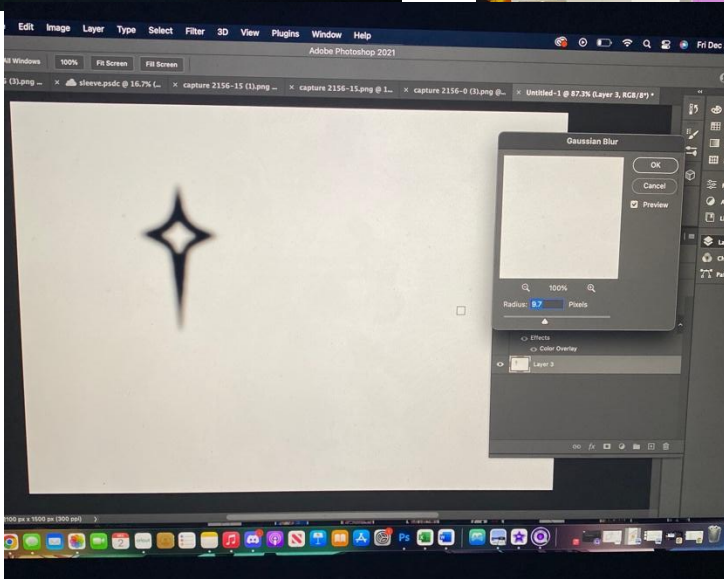
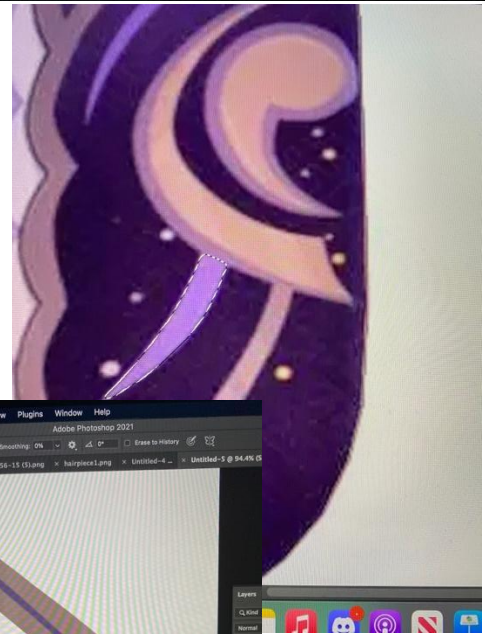
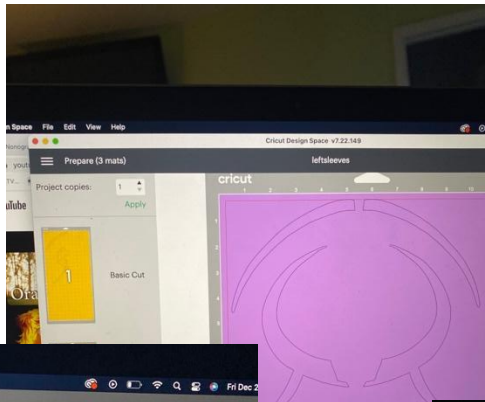
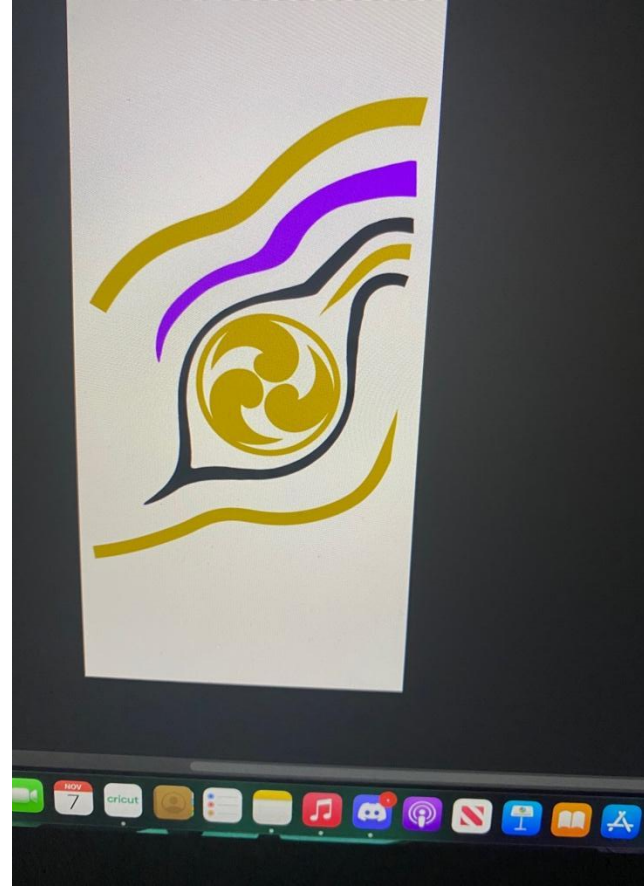
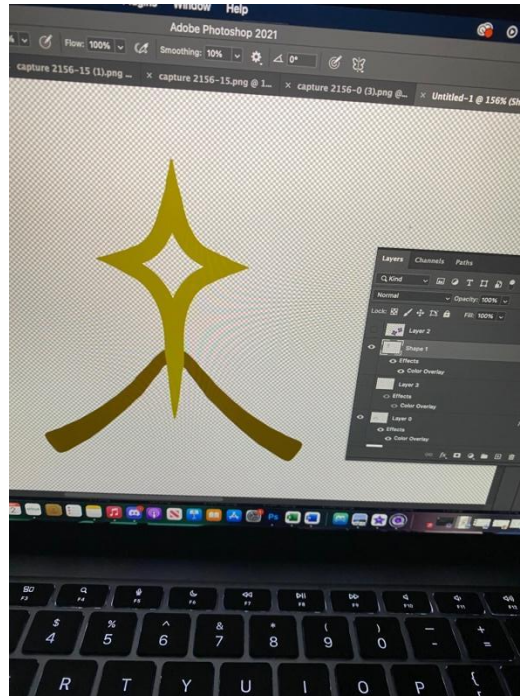
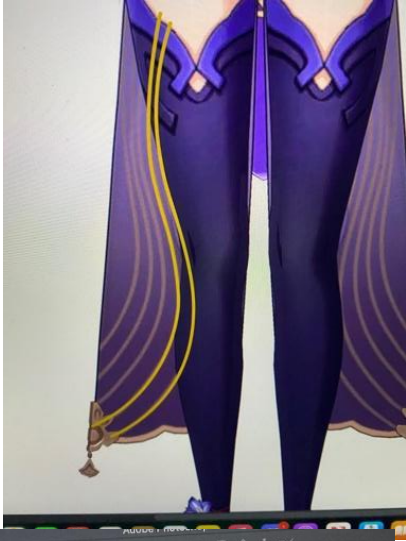
Shorts: Modified Simplicity 8718

Obi, Tails, Skirt, Back Fan, Ribbon, Thigh Highs, Bow, Bolero: Me

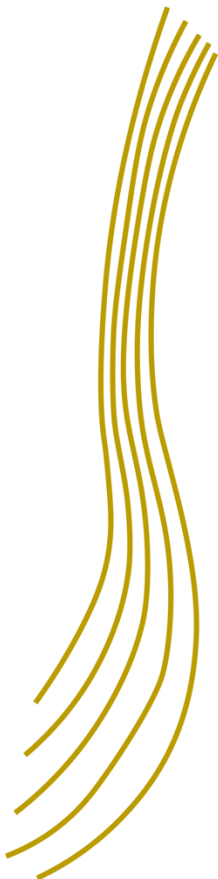
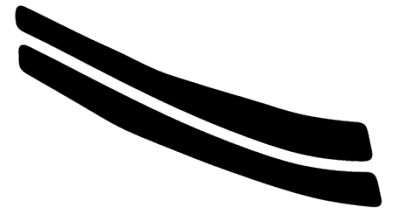
Supplies Used:

- Lavender Matte Peau de Soie Satin
 - Purple Power Mesh
 - Black Mystique Spandex
 - Purple Spandex
- Amazon, Siser and Cricut HTV
 - Red Matte Satin
 - Red Stretch Silky Satin
 - Yellow Brocade
- 5mm and 2mm EVA Foam
 - Craft Foam Flower Bases
- Barge and Weldwood Contact Cement
 - EasyCast Resin
 - Several Lace Trims
 - Black Bias tape
- Embroidery Thread for Tassels
- Gold Tassel Trim for the Hairpiece
- Hotfix and Flat Back Rhinestones
 - Rit DyeMore Royal Purple
- Black Fiberglass Color Guard Pole, carriage bolts and crutch tips
 - Band Shoppe Poly China Silk

Digital Editing



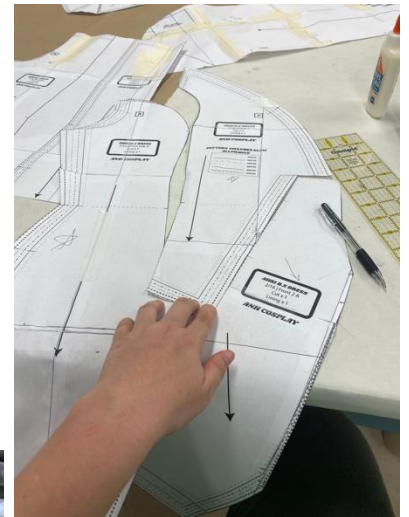
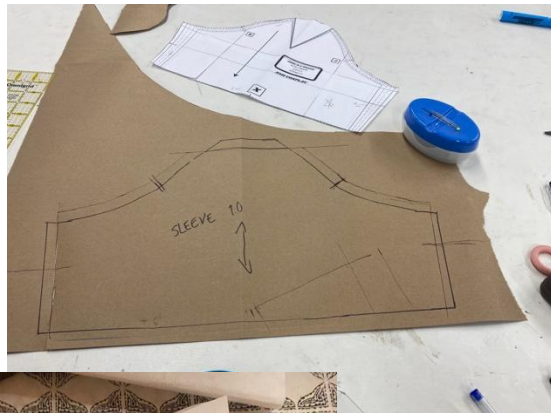
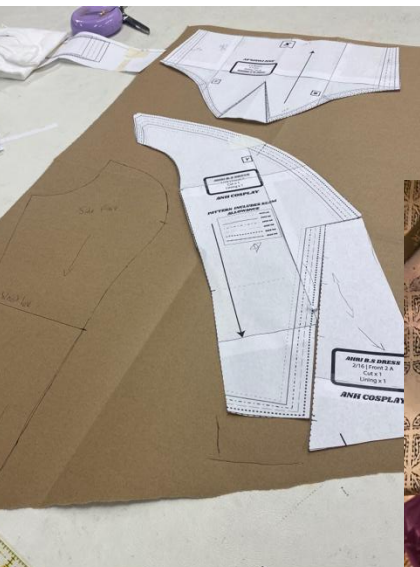
Finished Vinyl Files



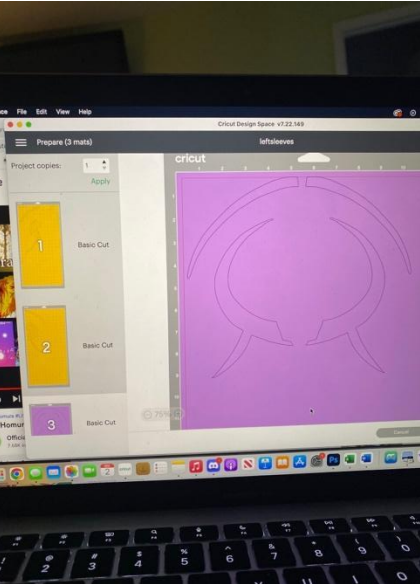
For the Vinyl patterns, I ripped the details from the actual game file and modified them in Photoshop. Some of the shapes, such as the tail lining and the sleeve stripes, were created using the curvature pen tool. Once they were edited, I inserted them into my Cricut design space and adjusted the proportions.



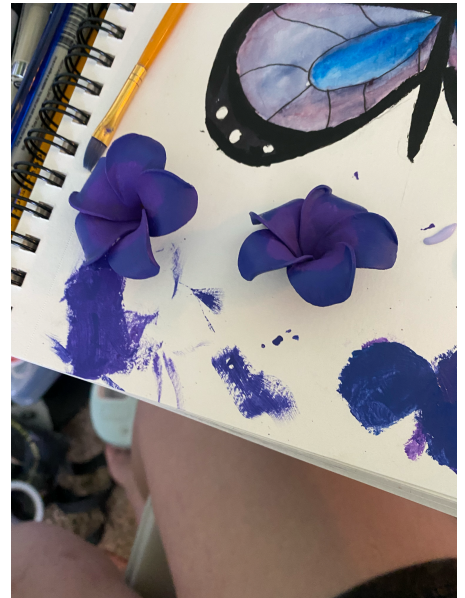
Patterning



HTV



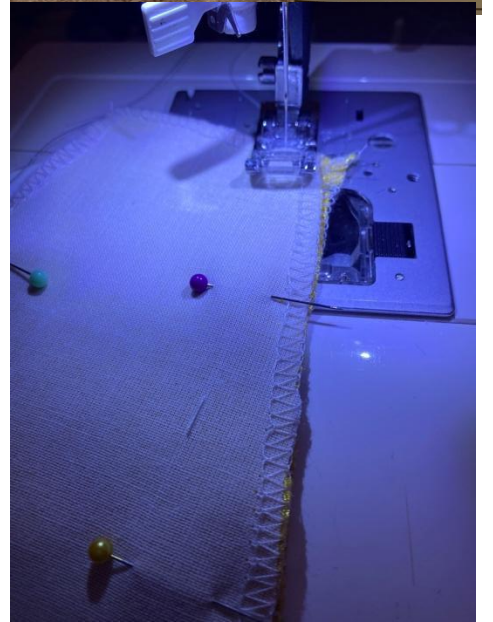
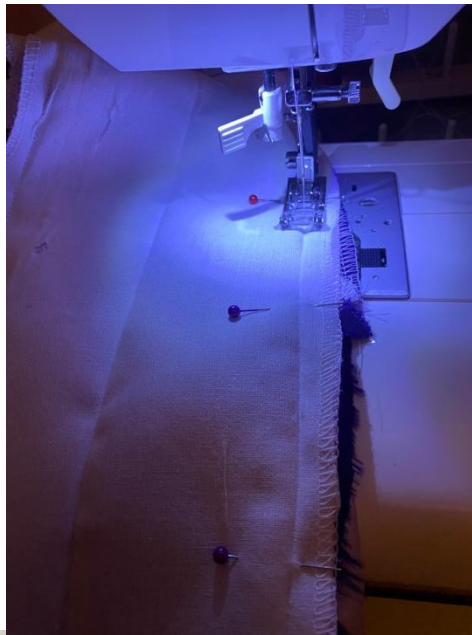
Detailing



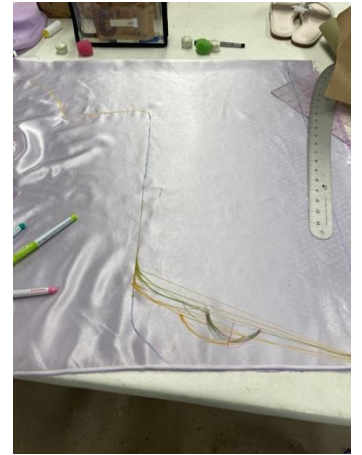
Ombre Dyeing



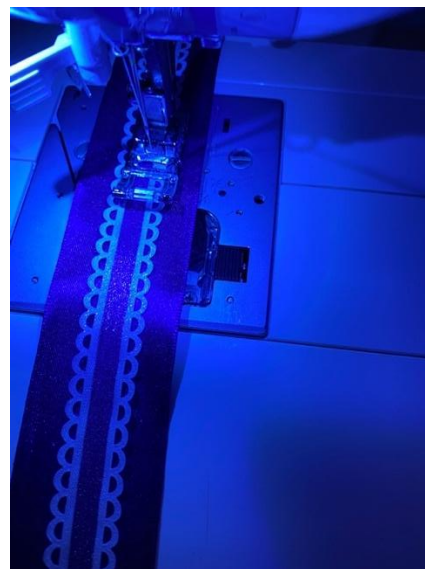
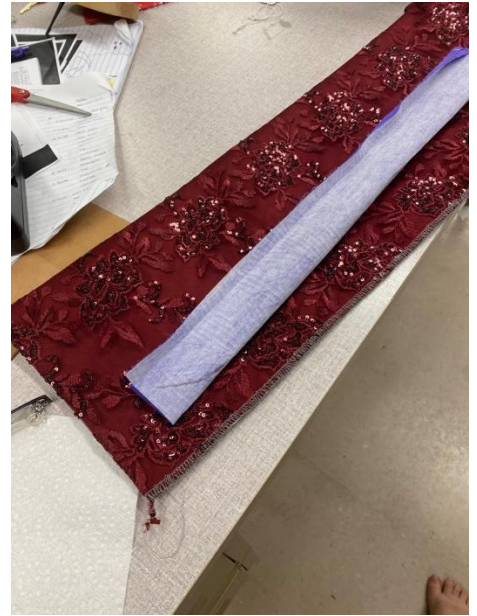
Basic Sewing



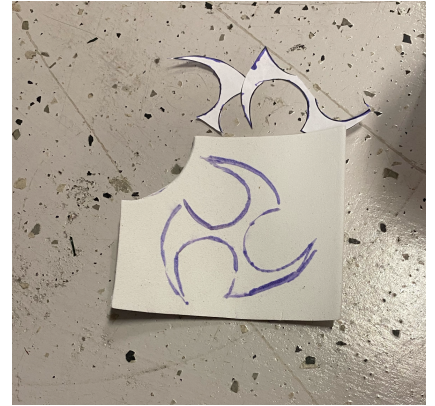
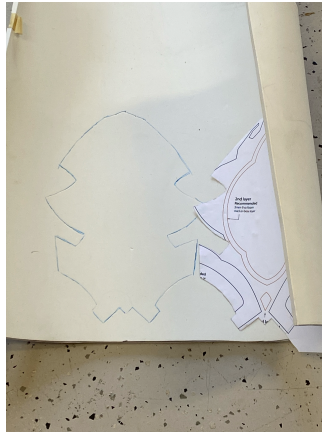
Cutting and Serging



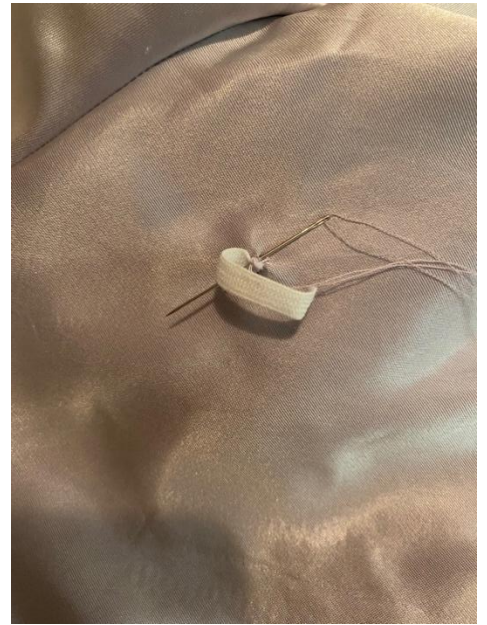
Trim and Overlay Sewing



Foam work



Misc



Last Write-up

Most of the work on Raiden Shogun has been in FAU's Costume Shop as I was a Theatre Design/Tech student there. As of December 16, I am officially a BFA Graduate.

I used a mix of home and industrial sergers to sew the pieces together. For the Ombré dye, I wet the fabric in order for the dye to have an even transition. I did a fabric test first, then did the sleeves and for the machine sewing, I utilized the Costume Shop sewing machines as well as my home Singer Confidence. Each pattern piece except for lining pieces were serged prior to sewing together to prevent fraying.

I hand placed each rhinestone and used a mix of hotfix and E6000 to apply them to the garment and foam flowers. For the painted pieces, I utilized spray paint, acrylic paint, and Rub n Buff. I then used Mod Podge Glossy sealer, and I am very pleased with the result.